

NHS Lothian – Children’s Services**Post: HCSW - Band 2****PERSON SPECIFICATION**

Criteria	Essential	Desirable
Personal Traits	Approachable Flexible Motivated Confident Articulate	
Qualifications & Training Level of education, professional qualifications, training and learning programmes/courses.	Good standard of general education	SVQ 2 in health/social care
Experience and Knowledge Type of experience, level at which experience gained. Depth and extent of knowledge.		Working with Children Child development Clinical experience
Skills/Abilities Range and level of skills, i.e. communication (oral, written, presentation), planning/ organisation, numeracy, leadership etc.	IT skills Ability to carry out delegated responsibilities/tasks Effective written and verbal communication skills	Ability to prioritise workload
Specific Job Requirements Environmental conditions, unsociable hours, car driver etc.		

If you do not meet the essential criteria as detailed above then please do not apply for this post as you will not be short-listed

JOB DESCRIPTION**1. JOB IDENTIFICATION**

Job Title:

Healthcare Support Worker Level 2 (Band 2)

Responsible to:	Staff Nurse
Accountable to:	Theatre Clinical Lead
Department(s):	Paediatric Theatres
Job Reference:	L-GEN-NM-NS-HCSW2
No of Job Holders:	6

2. JOB PURPOSE

As part of a multidisciplinary team, the post holder will carry out personal care duties for patients, in support of the registered nurse and other relevant professional practitioners, where appropriate.

3. DIMENSIONS

The post holder primary post will be within the Paediatric Theatres and Recovery area within the RHCYP

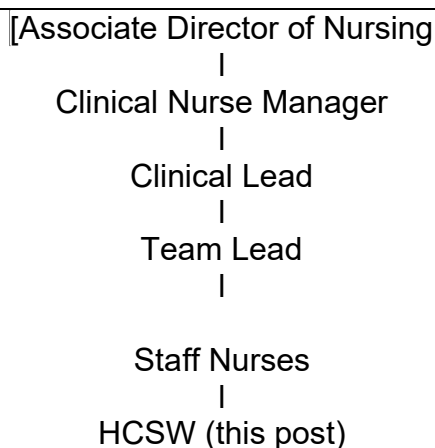
As part of a multidisciplinary team the post holder will carry out care duties for patients in support of and supervised by the registered nurse.

The post holder works is an integral part of the theatre and recovery team, being responsible for housekeeping duties, ensuring a clean, safe, comfortable and welcoming environment for patients, families and other visitors and supporting the registered nurse in the transfer of post operative patients from recovery to the ward areas.

The post holder is not responsible for managing the budget but needs to be aware of the resources available and the need to remain within the financial envelope.

The post is employed within NHS Lothian and there may be a requirement to work flexibly across Lothian to meet service demands.

ORGANISATIONAL POSITION



5. ROLE OF DEPARTMENT

The Operating Department consists of 6 fully equipped theatres and dedicated recovery area. Staff also cover “out of department” activities including MRI, CT Scanning and X-Ray in addition to providing specialist paediatric care at other hospitals. The range of elective and emergency specialities includes Neurosurgery Spinal, Orthopaedics, ENT, Ophthalmology, Dental Surgery, and Plastic Surgery, General Surgery haematology, oncology and Endoscopic GI cases.

To provide a high quality, safe and supportive environment in order to care for patients within the Perioperative environment meeting the identified physical and psychosocial needs. Ensuring the highest standard of patient care and management

6. KEY RESULT AREAS

1. To carry out a range of personal care clinical duties, including bathing, oral hygiene, assist in maintaining patient nutritional/fluid balance status to ensuring delivery of high quality patient care at all times. NB: this list is not exhaustive and will vary depending on area of work.
2. To plan day to day workload, under the direction of the registered nurse and according to patient need and ward needs.
3. To undertake escort duties as required and in line with local protocols.
4. To co-operate with and maintain good working relationships with both the multidisciplinary team and other Healthcare and Social Care professionals. Have an empathetic approach to patients, carers and relatives, answering any queries, suggestions or concerns they may have where possible, referring them to the registered nurse where appropriate.
5. To maintain up to date written and electronic records and reporting and escalating as required, informing the registered nurse of any observed change in the patients condition. Recording any changes to comply with local, Professional and Health service standards. Maintain patient confidentiality at all times.
6. To be responsible for ensuring personal ongoing training as required, ensuring skills / competencies are maintained.
7. To work within defined standards, protocols, policies and procedures for service area, directorate and NHS Lothian to ensure delivery of the highest level of patient care at all times.
8. To have an overall awareness of potential risks within the ward area assessing these at all times to ensure the health and safety clients, visitors and staff and compliance with related legislation and guidelines.
9. To monitor stock levels of all supplies and carry out / delegate housekeeping duties, to support and maintain the running of the ward in order to promote the effective and efficient use of resources.
10. Ensure patients property and valuables that are received by the ward for safe keeping are secured and processed as per NHS Lothian policy.
11. To participate in clinical audit of services provided to ensure evidence based practice is identified and implemented.
12. To support NHS Lothian's values of quality, teamwork, care and compassion, dignity and respect, and openness, honesty and responsibility through the application of appropriate

behaviours and attitudes.

7a. EQUIPMENT AND MACHINERY

The following are examples of equipment which will be used when undertaking the role:

Manual Handling equipment:

Stand-aid, full body hoist, bath hoist, glide sheets, pat slide, banana board.

Communication aids :

Telephone, computers.

Other:

Televisions, ice machine, nurse call system, various walking aids, raised toilet seats, electric bath, electrically controlled chairs, wheelchairs, trolleys, weighing scales, height measurement tool, specialist mattresses, bed pan washer.

This list is not exhaustive.

Note: New equipment may be introduced as the organisation and technology develops, however training will be provided.

7b. SYSTEMS

The following are examples of systems which will be used when undertaking the role:

TRAK - maintenance of patient records.

Pecos – for ordering stores and supplies.

Risk assessments.

eLearning modules – personal development.

Intranet and internet – access to policies.

Note: New systems may be introduced as the organisation and technology develops, however training will be provided.

8. ASSIGNMENT AND REVIEW OF WORK

Workload is allocated by the Registered nurse at the start of each shift and supervision is available throughout the shift.

The post holder will receive their work review and annual appraisal from the Registered Nurse.

9. DECISIONS AND JUDGEMENTS

Observe, recognise and report changes in patient condition including pertaining to both the emotional and physical needs.

Prioritisation of allocated workload.

10. MOST CHALLENGING/DIFFICULT PARTS OF THE JOB

Undertaking a physically, mentally and emotionally demanding job whilst at the same time taking

care to safeguard their own health and safety as well as those of colleagues and patients.

Maintain high standards of patient care within defined resources.

Working with patients who may be distressed, anxious, or terminally ill or have cognitive impairment and communication problems.

Maintaining skills and knowledge level in core competencies required for role.

11. COMMUNICATIONS AND RELATIONSHIPS

The post holder will communicate on a regular basis with the patient, their relatives, the multidisciplinary team, internal and external agencies involved with the provision of care using effective verbal, non verbal and written communication.

Will communicate proficiently with regards to planning, implementation and review of workload.

Requires to communicate effectively with patients who may be distressed/worried or anxious.

Communicate with the Registered Nurse regarding any patient care concerns their personal development needs.

12. PHYSICAL, MENTAL, EMOTIONAL AND ENVIRONMENTAL DEMANDS OF THE JOB

Physical Skills

Manual handling skills.

PC skills.

Physical Demands:

Manual handling on a daily basis including e.g. safely manoeuvre patients some of whom may be highly dependant, manoeuvring wheelchairs, hoists, moving clinical equipment.

Activities include repeated bending, crouching, and kneeling in restricted areas as well as standing/walking for long periods during the shift.

May participate in resuscitation procedures at the direction of the registered nurse/more senior staff.

Mental Demands:

Maintaining high levels of patient interaction on a daily basis and concentration required when observing patients conditions.

Maintaining high levels of concentration on a daily basis when checking documents/case notes and documentary observation whilst subject to frequent interruptions from patients/relatives/team members.

Ability to deal flexibly with frequently changing situations and unpredictable events (e.g. falls, patient illness) prioritising demands of clinical and non-clinical workload.

Constant awareness of risk factors.

Emotional Demands:

Communicating with distressed, anxious, worried patients/relatives/carers and supporting relatives/carers following receipt of bad news.

Caring for patients who are terminally ill or have a progressive illness.

Supporting new staff and learners.

Environmental:

Working in conditions which involve daily exposure to bodily fluids including sputum, vomit, urine, faeces, open wounds and exudates.

Potential exposure to episodes of verbal and physical aggression from patients / relatives / carers.

13. KNOWLEDGE, TRAINING AND EXPERIENCE REQUIRED TO DO THE JOB

SCQF Level 6 in Healthcare related subject and/or appropriate experience/competency to undertake role.

Basic literacy and numeracy skills.

Effective written and verbal communication skills.

Ability to work with people and as part of a multidisciplinary team.

Ability to show initiative and work without direct supervision on a daily basis.

Organisational and time management skills.

14. JOB DESCRIPTION AGREEMENT

A separate job description will need to be signed off by each jobholder to whom the job description applies.

Job Holder's Signature: ||

Date: ||

Head of Department Signature: ||

Date: ||